



VIBROMATIC

COMPANY, Inc.

1301 S. 6th St. ~ Noblesville, IN 46061-1358
 Phone (317) 773-3885 Fax (317) 773-2342

All Vibromatic Straight Line Drive Units are designed to move parts in a straight line motion from a junction at one end of a track to a junction at the opposite end. We have incorporated adjustability with a (3) point jack screw arrangement. This allows for ease of alignment between the straight line track and its interface with mating equipment. All of our Straight Line Drive Units are capable of feed rates up to and sometimes beyond, 250 inches per minute. Standard operating voltage for one of these units is 110V, 60Hz with a maximum power draw of 2.4 amp. Vibromatic can supply as an option, an "H Series" variable speed control for this straight line drive unit. Shipping weight of this unit is approximately 55lbs. Special tooling arrangements and special power requirements can be quoted upon special request.

Inline

Drive Units

TUNING

Tuning an inline to proper frequency involves the proper proportions between the mass and the springs. The natural frequency of the inline should be as close as possible to the 60 cycle (rectified) or 120 cycle running frequency of the coil.

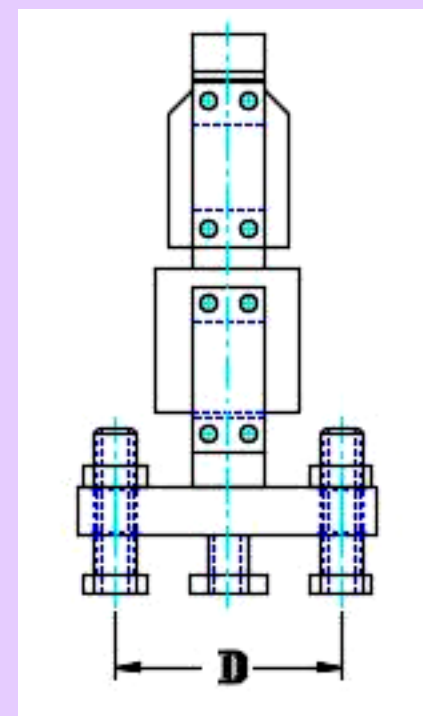
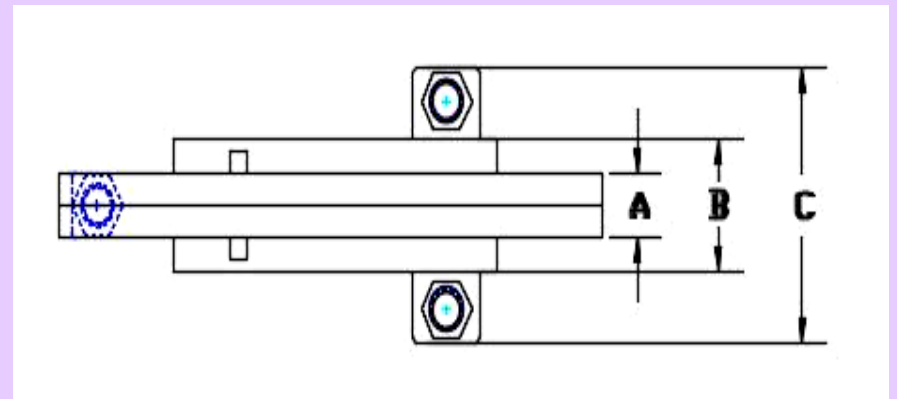
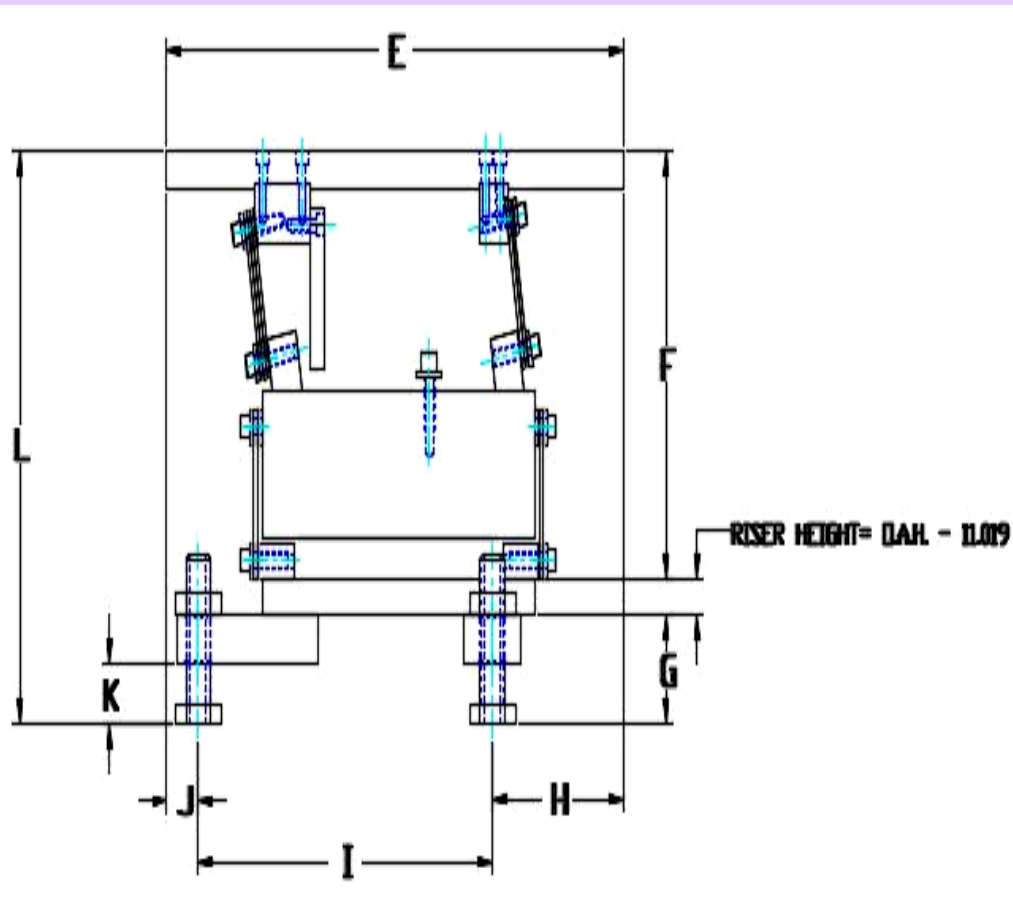
When springing an inline unit, maintain equal springing in all spring packs if possible. If you add a spring to one side, the next spring should be placed exactly opposite. Also, keep the thickest springs nearest the mounting point.

Inline units have fairly wide range between the lowest and highest points of the tuning and should be finally tuned with the inline carrying a normal load of parts and running at the slowest possible control setting, while maintaining the specific rate.

MOUNTING

Mount the tooling to the top bar, align the tooling with the discharge of the machine that the parts are coming from. Align the tooling with the escapement, dead nest, or other means of containment. You may either use the provided jack screws, or have custom mounting pads.

If given a discharge height of the customer's machine, and the height of the mounting surface, Vibromatic can create custom mounting pads that will attach to the mounting surface. This will allow the proper slope and alignment of the tooling.



Spare Parts

Part Number	Description
L-120V	Vibratory Coil (120 Volt)
L-240V	Vibratory Coil (240 Volt)
SL-19907S	.07" Inline Spring
SL-19909S	.09" Inline Spring
SL-19913S	.13" Inline Spring

Dimensions

Model	A	B	C	D	E	F	G	H	I	J	K	L
SL-2011	1.5"	3.0"	6.25"	4.75"	16.125"	8.769"	2.25"	4.62"	10.39"	1.115"	1.25"	11.769"
SL-3011	1.5"	3.0"	6.25"	4.75"	25.285"	8.769"	2.25"	4.62"	19.55"	1.115"	1.250"	11.769"
SL-4011	1.5"	3.0"	6.25"	4.75"	33.891"	8.769"	2.25"	4.62"	28.156"	1.115"	1.25"	11.769"